

Organic Unity: A Statewide Biobank in Pathology

Simon Cooper



Health
Statewide Biobank

Current State of Biobanking

- Biobanking worldwide is fragmented
- Small biobanks grown from research programs
- Poorly resourced, costly, diffuse assets and infrastructure

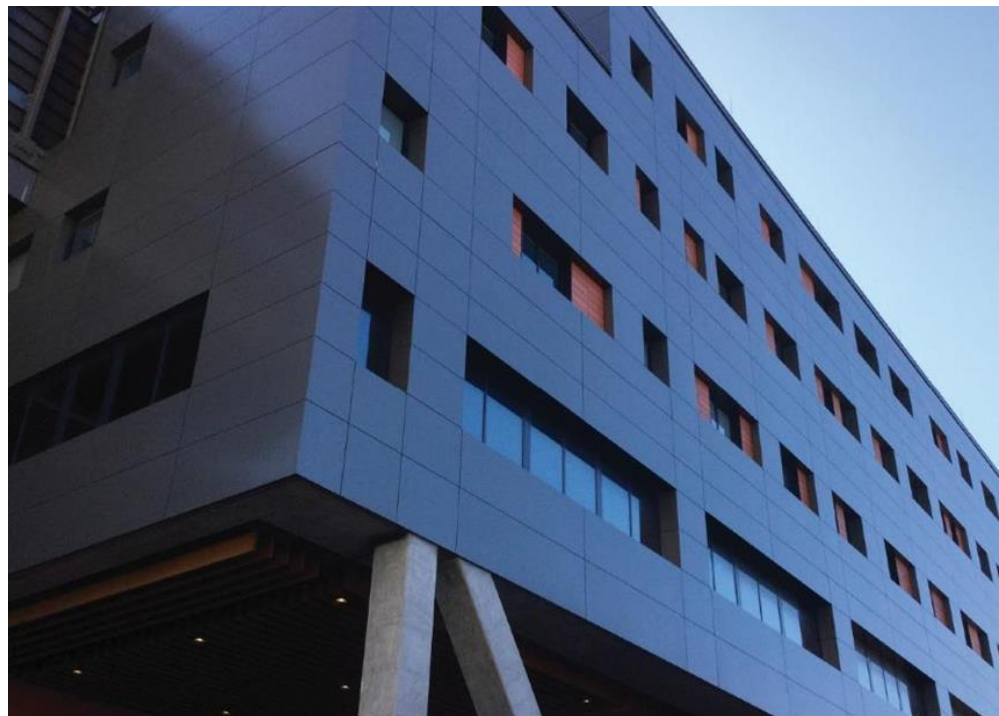
Solving the Problem - Unity

- Centralisation of infrastructure
- Remove barriers for researchers
- Integrate the philosophy of biobanking

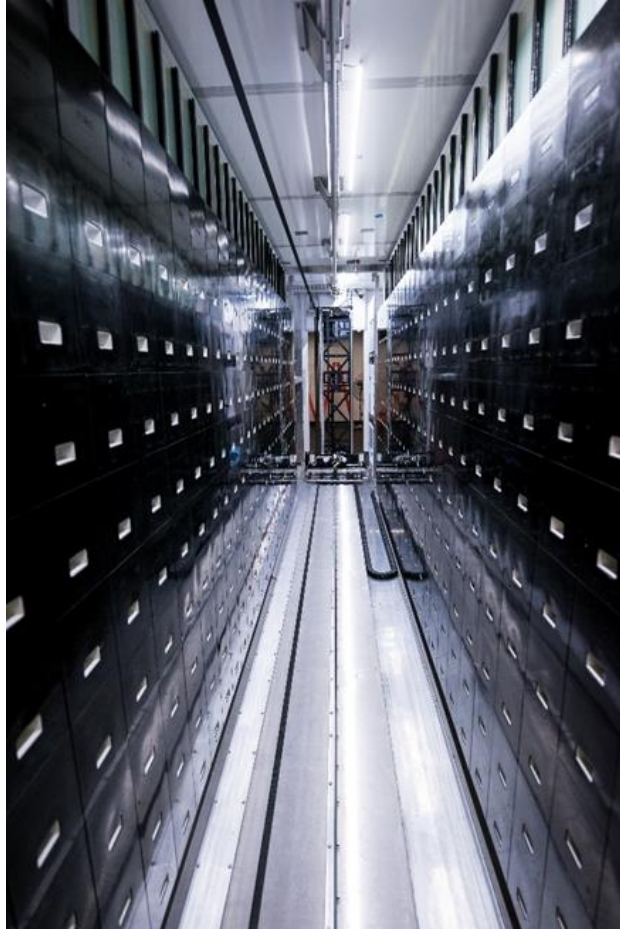


NSW Health Statewide Biobank

- Statewide Service
- Pathology Integrated
- Agnostic
- Large Scale



NSW Health Statewide Biobank



- Greenfields Build
- No existing LIMS
- External Stakeholders
 - Clinical Trials
 - Private Industry
 - Public Health / MRIs

Aspirational Biobank Infrastructure

- PALGA in Netherlands



- UK BioCentre

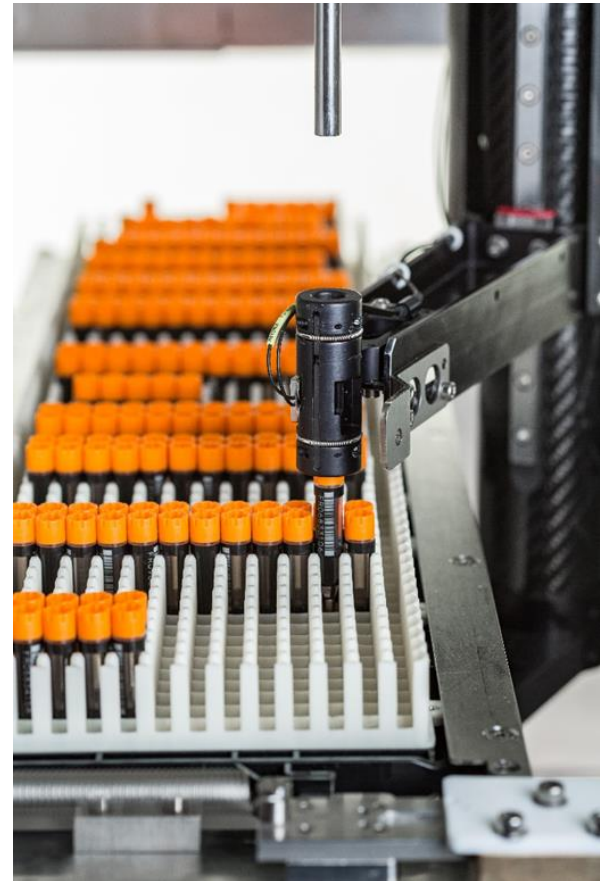


- Pan-European Biobanking and Biomolecular Resources Research Infrastructure



Services based Infrastructure

- Blood & Tissue collection
- Blood & Tissue processing
- Storage @ RT / LN2 / -80
- Live cell isolation
- DNA/RNA Extraction



On Boarding Process

- Application Form
or
 - Access Form
- ↓
- Quotes
- ↓
- Agreements + MTAs
- ↓
- Service provision with ethics

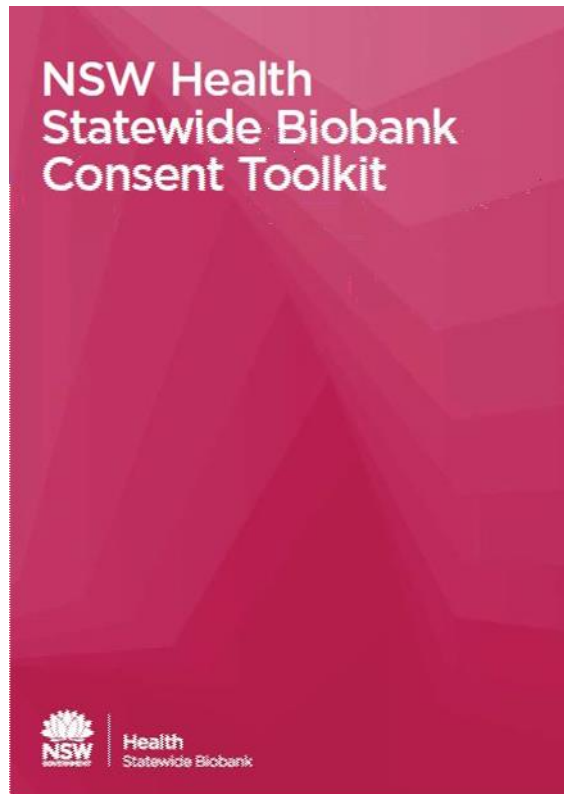


More than just infrastructure!

- Removing barriers for research
- Integrating the Biobanking philosophy



Consent Toolkit



- Being updated to include MBS/PBS data
- Federal Government negotiation
- Access will still need to be approved

Consent Toolkit Education

- Multimedia education
 - Videos
 - Pamphlets
- Three target groups
 - Patients
 - Researchers
 - Consenting staff



Certification Program

- New voluntary certification program sharing education and best practice guidance
- Sign up at: <http://nsw.biobanking.org/>

Log In



Health
Pathology

Biobank
Certification Program

Home Certification Program Education FAQ Biobank Locator Pathlab Locator Enrol

Home

Welcome to the NSW Biobank Certification Program



Health
Statewide Biobank

Certification Program

- National Deployment
- Cost for Non-NSW banks
- Updated content
 - ISO
 - Best Practice Guidelines

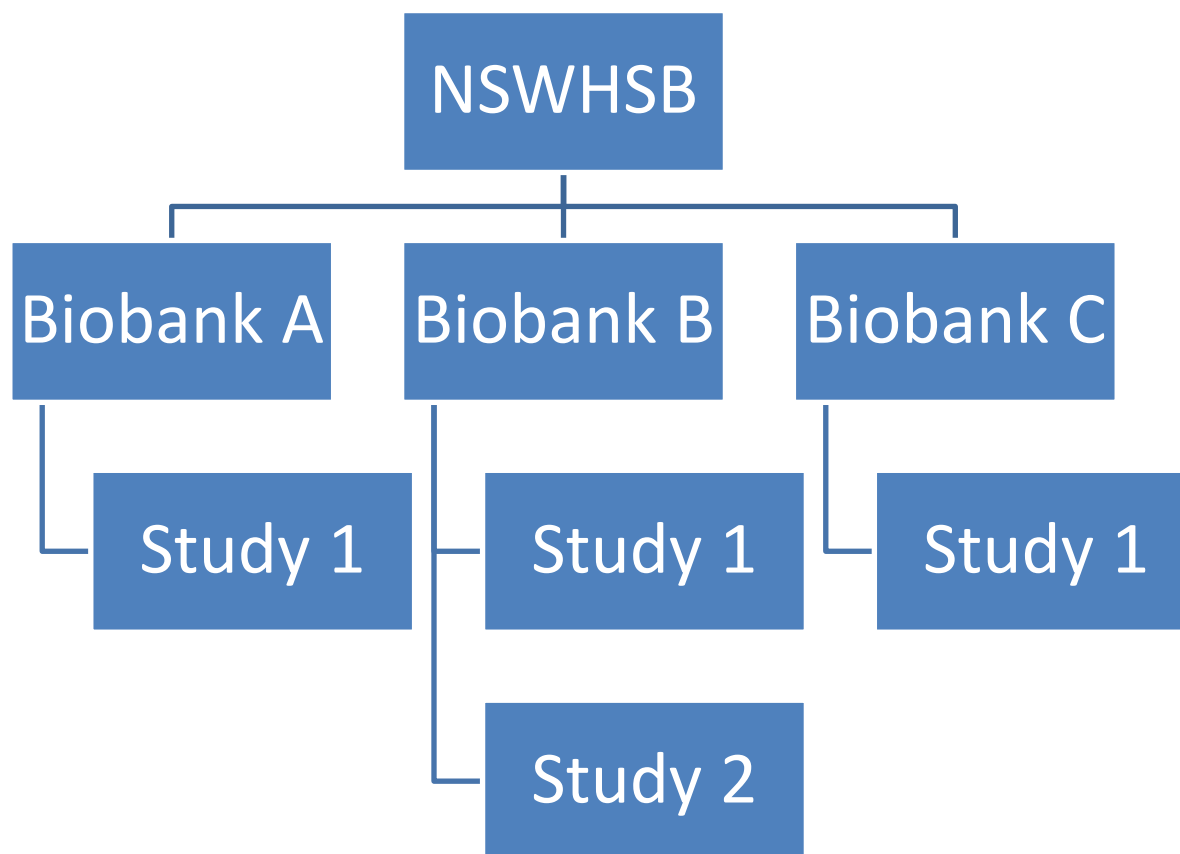


Biobanking LIMS

- Specialised biobanking software
- Highly Modular
- Web based
- GLP Compliant
- Licensable

The screenshot displays the System Admin Menu for the LIMS. The interface is divided into a left sidebar and a main content area. The sidebar contains a navigation menu with sections: Analyst (with a gear icon and left arrow), Samples (with an up arrow), Receive (with an up arrow), Reagents (with an up arrow), and Tests (with an up arrow). Each section lists specific actions: Login Samples, Manage Samples, Receive Samples (73), Receive Packages (0), Receive Batches (2), Receive Reagents, Mix Reagents, and Manage Reagents. The main content area is titled 'System Admin Menu / LIMS Menu' and features a workflow diagram. The diagram consists of four horizontal flows, each starting with a colored box representing a main category: Batches (blue), Requests (green), Formulations (orange), and Samples (blue). Each flow has three steps: 1. Batches: Add Batch, Batches, Batches Pending Release. 2. Requests: Add Request, New Requests, Requests Pending Acceptance. 3. Formulations: Formulation Projects, Formulation Methods, Formulation Search. 4. Samples: Quick Login, Multiple Login, Login Using Wizard. The top navigation bar includes 'Batches', 'Requests', 'More', a hamburger menu, a notification bell with '1', a search icon, a help icon, and a user profile picture. The bottom status bar indicates 'SYSTEM ADMINISTRATOR ON train06 TIME ZONE: EDT'.

Module Model



LabVantage Licensing

- User License based model
- Hosted on eHealth network
- Accessible outside of NSW Health
- Storing sample meta data only



Tissue Specimen Locator

- Marketing issue
 - Enable research



<http://specimens.cancer.gov>

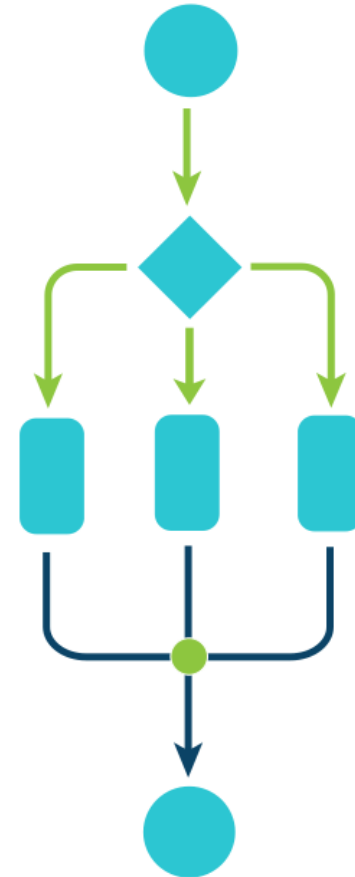
- Integrate with BLIMS



- Data protection and exchange

Workflow Project

- Research Project
- Embedding Biobanking into Pathology
- Targeting anatomical pathology labs



Workflow Project

- Assessing and reviewing resource requirements
- Attempting to change culture in target labs



E-newsletter

- For all the latest biobank news, sign up for our e-newsletter today
- Issued every 6-8 weeks
- Join the list by emailing NSWPATH-Biobanking@health.nsw.gov.au or speak to one of here today

NSW Health Statewide Biobank Supporting world-class health and medical research

Issue 1, February 2018 [Subscribe to our newsletter](#)

All eyes on official launch

The NSW Health Statewide Biobank was officially opened by the NSW Minister for Health and Medical Research Brad Hazzard on Monday 13 November 2017.

The \$12 million state-of-the-art facility is being managed by NSW Health Pathology and will help researchers change the way life-threatening illnesses are detected and treated. One day it could even support a cure for cancer, diabetes, dementia and more. Minister Hazzard took a guided tour of the facility accompanied by NSW Chief Health Officer Dr Kerry Chant and the media.

Over 80 pieces of positive national, metro and regional media coverage (print, broadcast and online) was secured reaching over 3.5 million people. [Read the coverage here](#) and watch the 3 minute launch film [here](#).

Biobank open days

Come and take a tour

Attention researchers, scientists, clinicians, research institutes - we want to partner with you!

We're throwing open the doors and hosting a series of open days at the NSW Health Statewide Biobank during February, April and May. This is a chance for the research community to take a behind-the-scenes tour of how this world-class facility can support your breakthroughs in the detection, diagnosis and treatment of disease.

When: 10, 11 & 12 April or 1, 2 & 3 May 2018
Time: Each day from 9.30 - 11.30am, 12.30 - 2.30pm and 3 - 5pm.
Where: Professor Marie Bashir Centre, Royal Prince Alfred Hospital Campus.
Map provided once place is reserved.
RVP: Via [Eventbrite](#). Places are strictly limited to 25 people per session, so get in early to register.

[Find out more](#)

Supporting collaboration and innovative practices

Questions

For any further information, contact:

Simon Cooper

Chief Operating Officer, Biobanking Services

T: (02) 4920 4138

E: NSWPATH-Biobanking@health.nsw.gov.au

